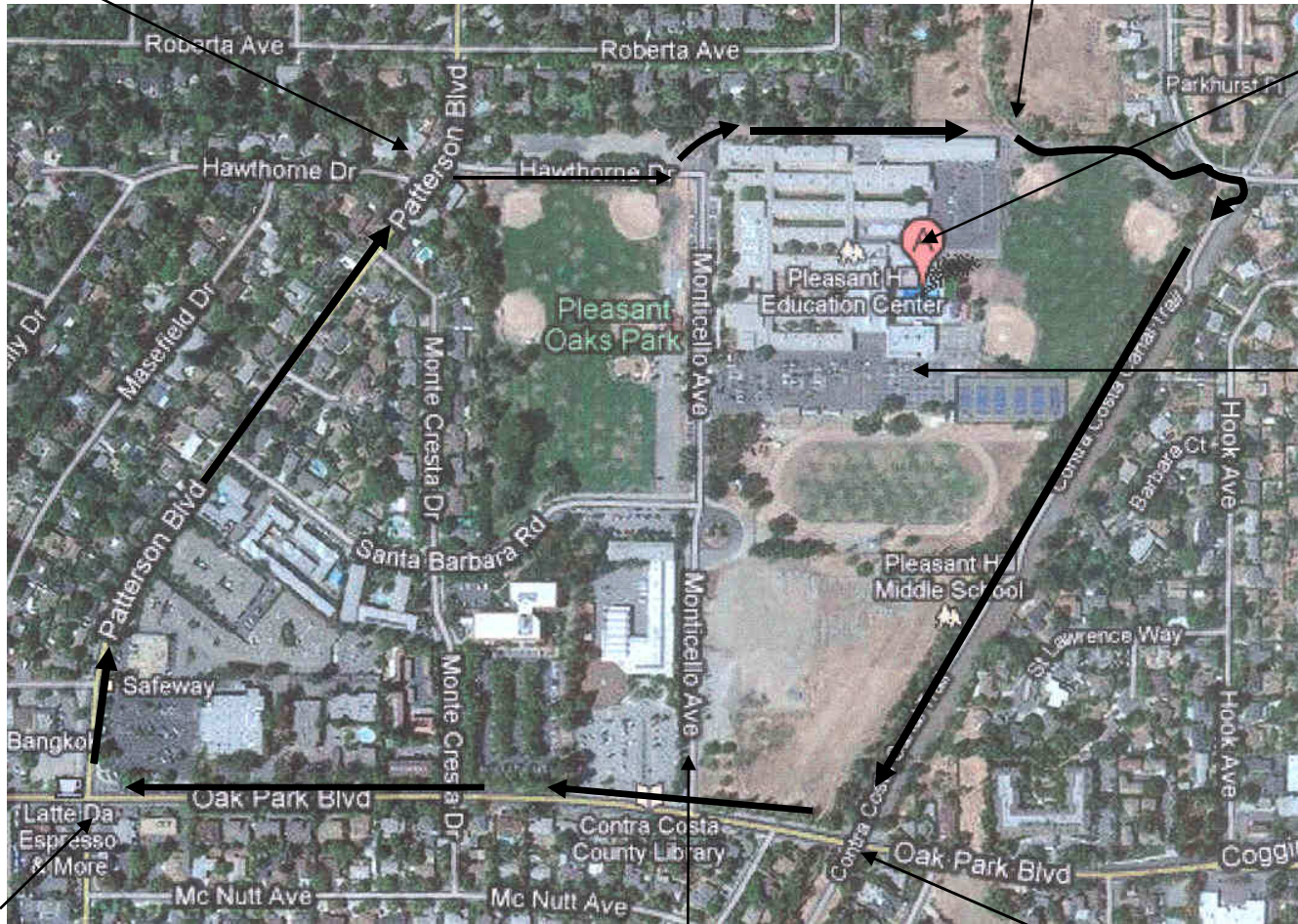


## Bike & Run Course Map

From Patterson Blvd, turn right onto Hawthorne Drive. At the end of Hawthorne, follow the road as it turns to the left to go down the north campus access road.



Start and finish bike/run courses here. Volunteer stationed here will be tracking laps completed for each participant

Transition area for bike/run will be outside north pool gate. Then proceed to start of bike/run course. Finish line is at transition area.

Park in lot on the south side of campus. Walk through or around pool area to check-in tables & transition area on north side of pool/campus, by Adult Ed parking lot.

From Oak Park Blvd, turn right to follow Patterson Blvd

For the run course, turn right onto Monticello Ave., continue on Monticello past the front of campus and go down the north campus access road to complete the run loop.

From Contra Costa Canal Trail, turn right to follow Oak Park Blvd